

STONEBRIDGE

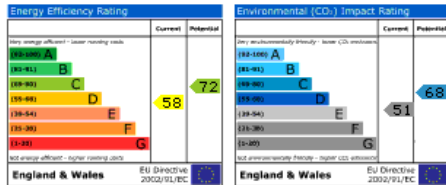
Independent Estate Agents

**36 , Kingsland Road,
Shepton Mallet, BA4 5SF**



A three bedroom semi-detached family home with a generous sized garden and situated close to local amenities.

Asking Price: £155,000



www.stonebridgesouthwest.co.uk

Tel: 01749 330400 Fax: 01749 334370
33 High Street Shepton Mallet BA4 5AQ

Details

- * Semi-detached
- * 2 Receptions
- * Generous sized gardens
- * 3 Bedrooms
- * Outbuildings
- * No onward chain

A semi-detached family home located close to town centre and local amenities. Accommodation comprises: Living room, dining room, kitchen, utility room, W.C and store room. On the first floor are three bedrooms and a family bathroom. There are also two further storage rooms accessed from garden. This property is in need of updating but has considerable potential. No onward chain.

Outside

To the front of the property is a garden laid mainly to lawn with a hard standing. A gate provides side access to the entrance door and a generous rear garden laid mainly to lawn. Two brick-built outhouses and the utility room can be accessed from the path.

Services

All mains services are connected

Local Authority

Mendip District Council

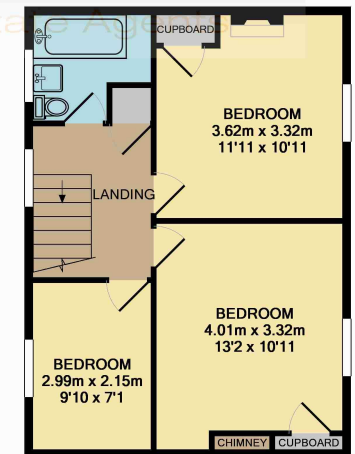
Shepton Mallet

This historic market town is conveniently located in the heart of the Mendip Hills. Approximate commuting distances to: Bath 21.5 miles, Bristol 21.1 miles, Yeovil 18.6 miles, Wincanton 14.7 miles, 6 miles from the Cathedral City of Wells.



GROUND FLOOR
APPROX. FLOOR
AREA 58.1 SQ.M.
(626 SQ.FT.)

STONEBRIDGE
Independent Estate Agents



1ST FLOOR
APPROX. FLOOR
AREA 41.7 SQ.M.
(449 SQ.FT.)

TOTAL APPROX. FLOOR AREA 99.8 SQ.M. (1075 SQ.FT.)
Measurements are approximate. Not to scale. Illustrative purposes only
Made with Metropix ©2008